

- APPROVED
- APPROVED WITH SHOWN CHANGES
- RESUBMIT

SIGN: _____ DATE: _____



ITEM NO.	DESCRIPTION	QTY
1	450 CUBIC FOOT GRIST CASE	1

NOTES:

ALL DIMENSIONS ARE FOR REFERENCE ONLY.

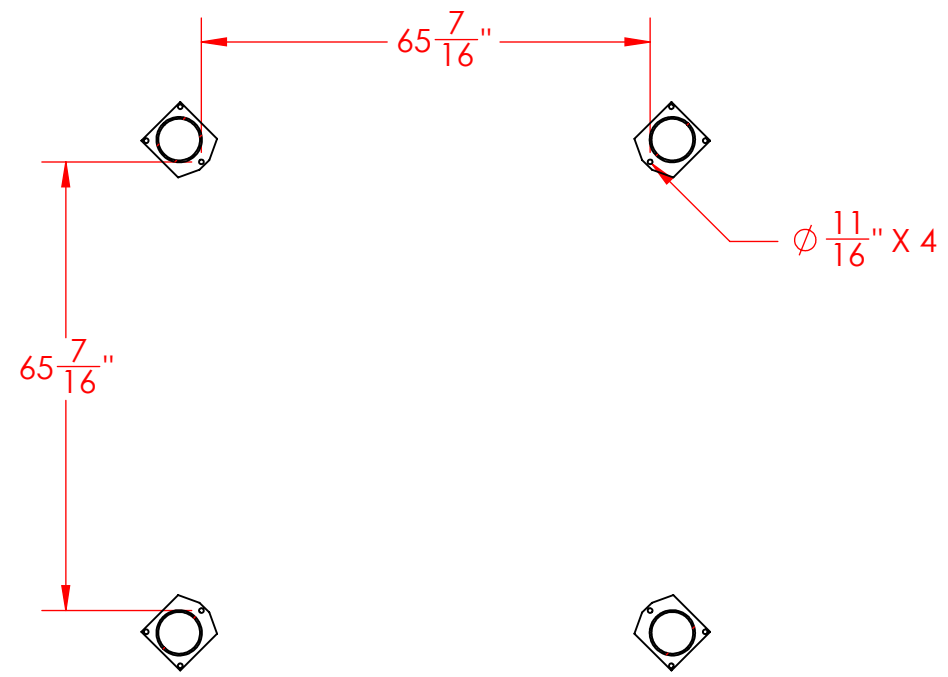
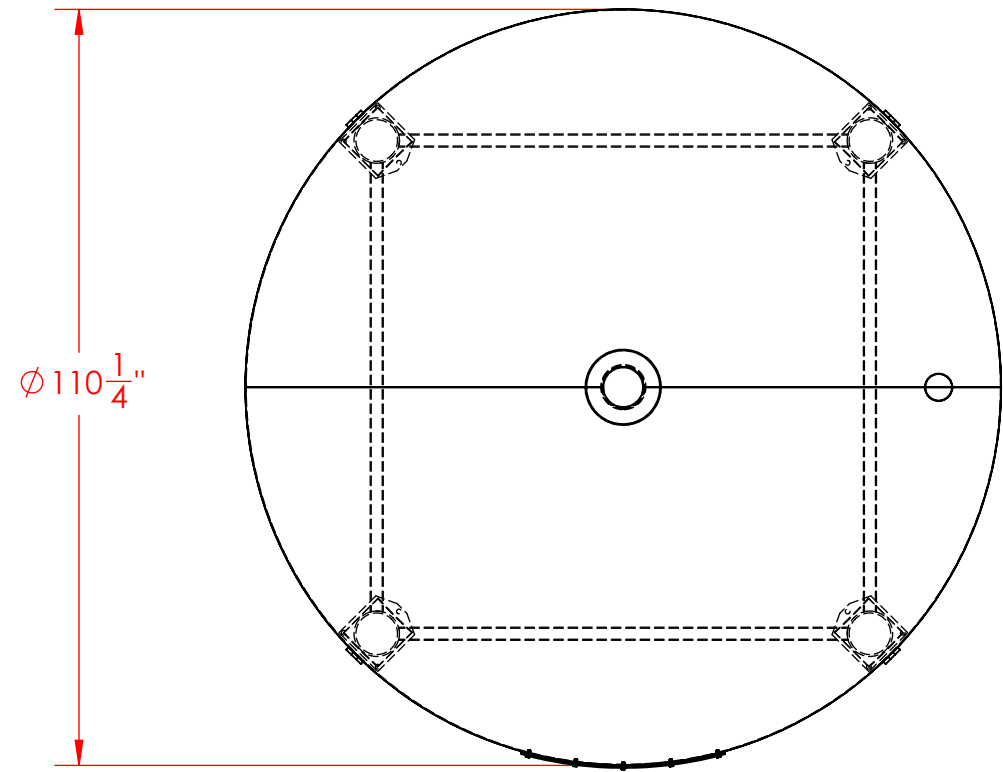
- A** VESSEL IS CONSTRUCTED FROM 304 STAINLESS STEEL WITH 2B OUTER FINISH AND SANITARY INTERIOR FINISH.
- B** 10 GAGE BOTTOM CONE
- C** VESSEL IS MOUNTED ON A HEAVY DUTY STAINLESS STEEL TUBE FRAME WITH 4 X BOLT-DOWN FEET
- D** VESSEL FEATURES A 26" X 26" BOLTED ACCESS OPENING
- E** VESSEL IS EQUIPED WITH FOUR HEAVY DUTY LIFTING EYES
- F** LEG JOINTS ARE WELDED TO VESSEL AND FITTED WITH 10 GAGE BACKING PLATES

EMPTY WEIGHT - 1876 LBS.

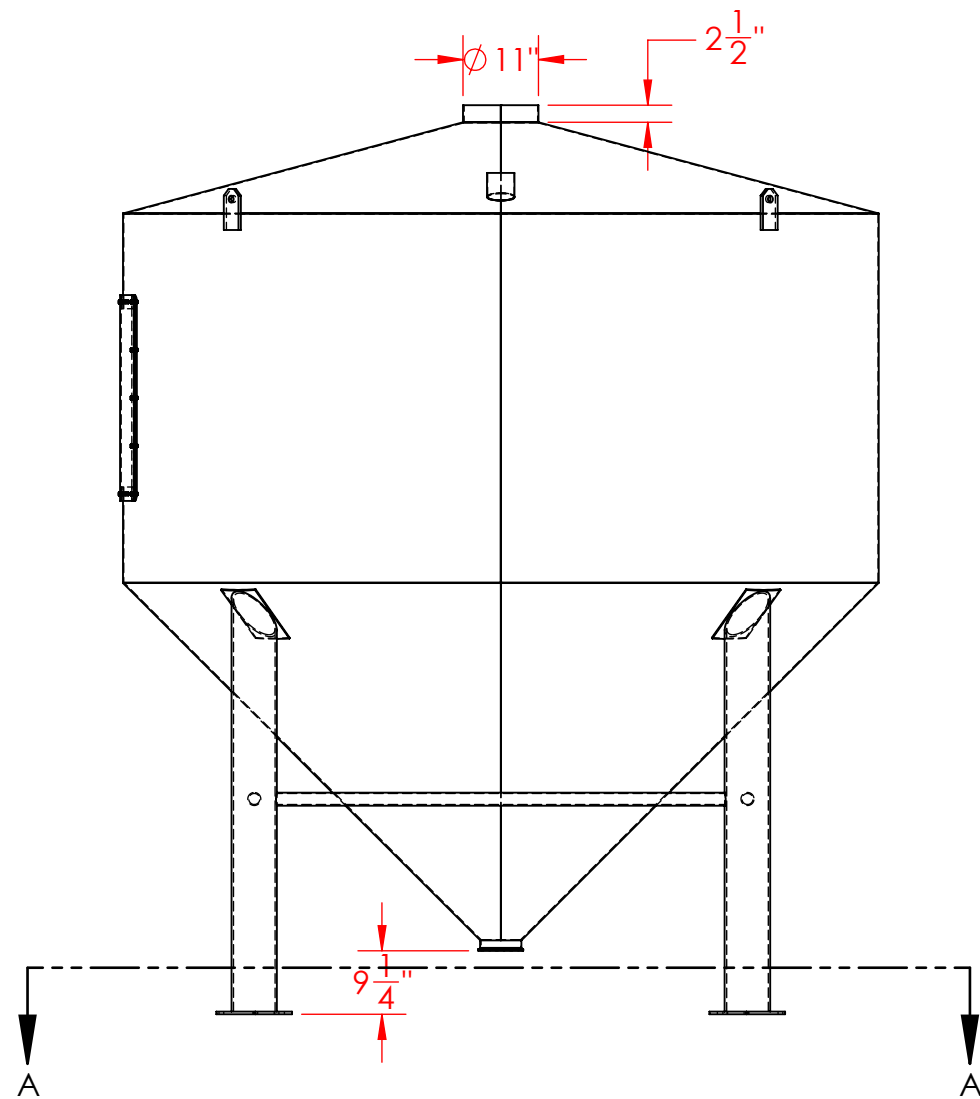
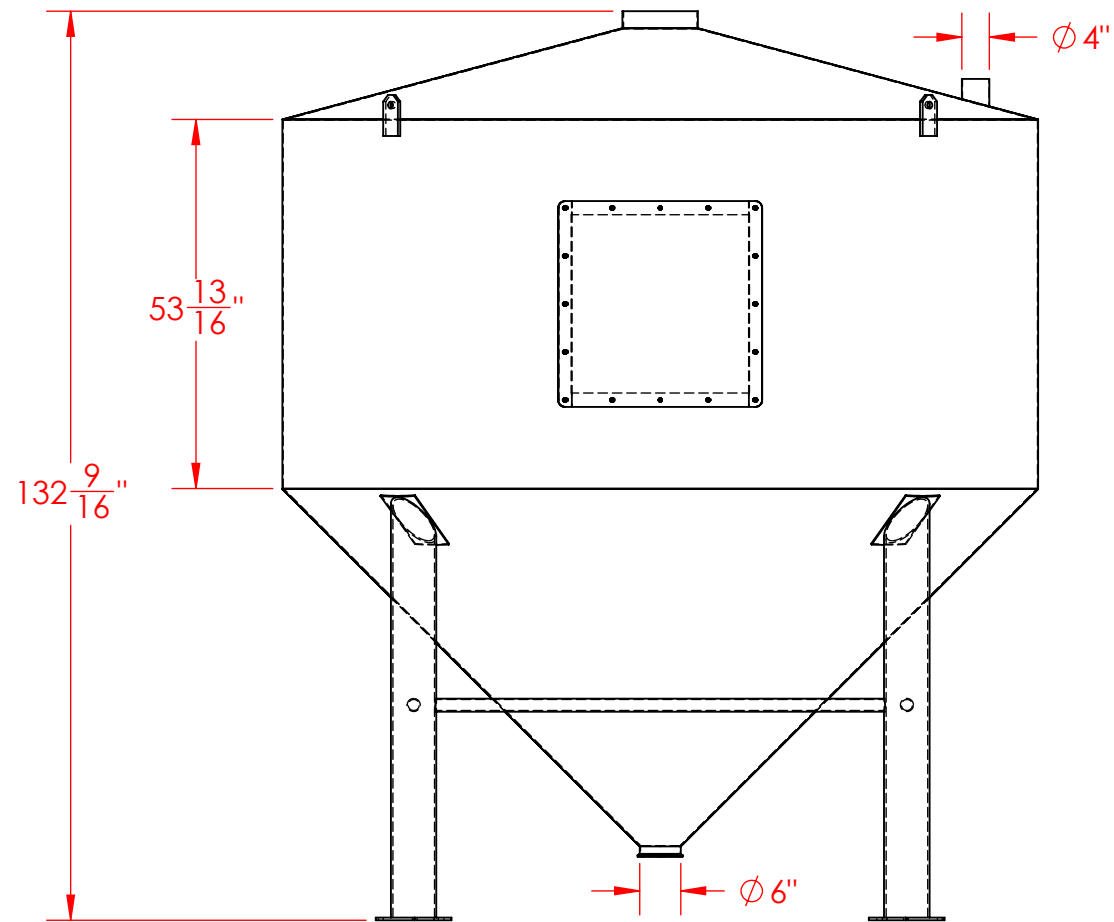
LIQUID CAPACITY - 3,172 GALLONS

GRAIN CAPACITY - 11,436 LBS.

REV.	DESCRIPTION	BY	DATE
ABM Equipment			
SCALE:	APPROVED:	DRAWN BY:	SL
DATE: 8/31/2020		SHEET: 1	OF 2
PROJECT:	GRIST CASE		WEIGHT
	DWG./JOB NO. PR2054-01		REV.



SECTION A-A



SCALE:	APPROVED:	DRAWN BY: SL
DATE: 8/31/2020		SHEET: 2 OF 2
PROJECT:	GRIST CASE	
	DWG./JOB NO. PR2054-01	REV.